



This is the second in a series of expanded PHC newsletters. Along with photos that are truly a mystery (at least to the author of this column and his colleagues), we will feature images that previously were a mystery or were incorrectly identified, with cogent analysis leading to the correct identification.

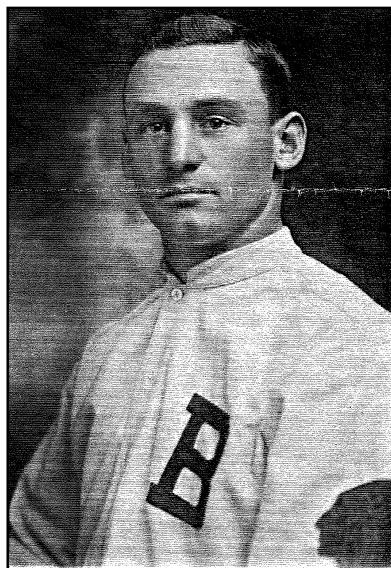
Mystery Photo – Cold Case

by Mark Fimoff, bmarlowe@comcast.net

In the previous issue, the difficulties of facial identification were discussed. This can be quite a challenge, and knowledgeable people will at times disagree. It was shown that in some cases, the technique of ear matching can resolve disagreements. Finally, an unsolved cold case from the January 1995 PHC newsletter was re-opened. This case will now be resolved.

Photo #1 is the mystery image from the 1995 newsletter. It's easy to verify that the unknown player is wearing a 1913–1915 Boston Braves uniform. Photo #2 is Les Mann, from the 1912 Seattle PCL team picture in the 1913 Spalding Guide. Though Photo #2 is of poor quality, it is reasonable to presume that most people will think these two subjectively look enough alike to merit a closer look.

So, from the 1915 Spalding Guide, let's get a clearer photo of Les Mann for further analysis.



Mystery Photo #1

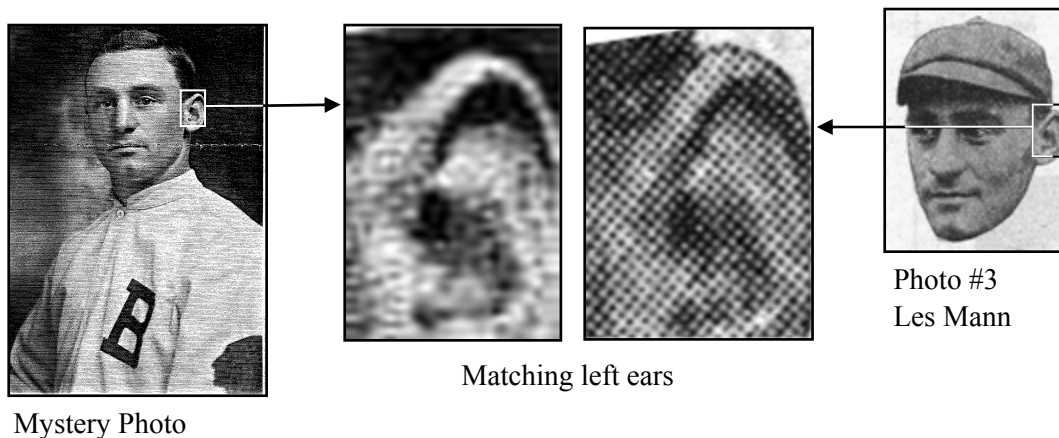


Photo #2
Les Mann,
Seattle, PCL 1912



Photo #3 - Les Mann,
1915 Spalding Guide

If you read the previous column, you've probably guessed that what follows is an examination of his ear. Photo #3 is clearly a good choice, as it displays Mann's left ear at an angle very similar to that shown in the mystery photo. However, before getting out our Q-tips, we must consider that photo #3 was created by actually cutting out Mann's head (presumably with scissors) from its original background and placing it on a different light colored background. In this manual cutting operation, the artist was less than careful in following the true outlines of his ear, snipping off a bit of earlobe and messing up the back edge of his ear. But, if we crop away the part the artist distorted, there's still enough remaining to indicate a match

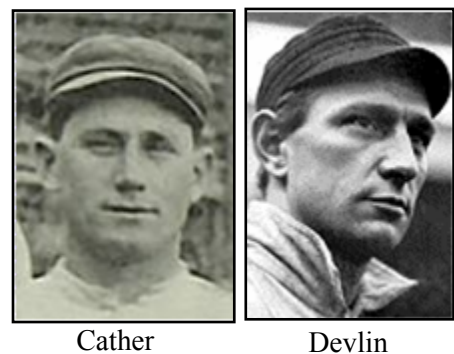


In 1995 it was Neal McCabe, co-author of "Baseball's Golden Age—The Photos of Charles M. Conlon", who suggested it was Mann, but no one else agreed. I'm with you Neal. 📷

Reader Responses

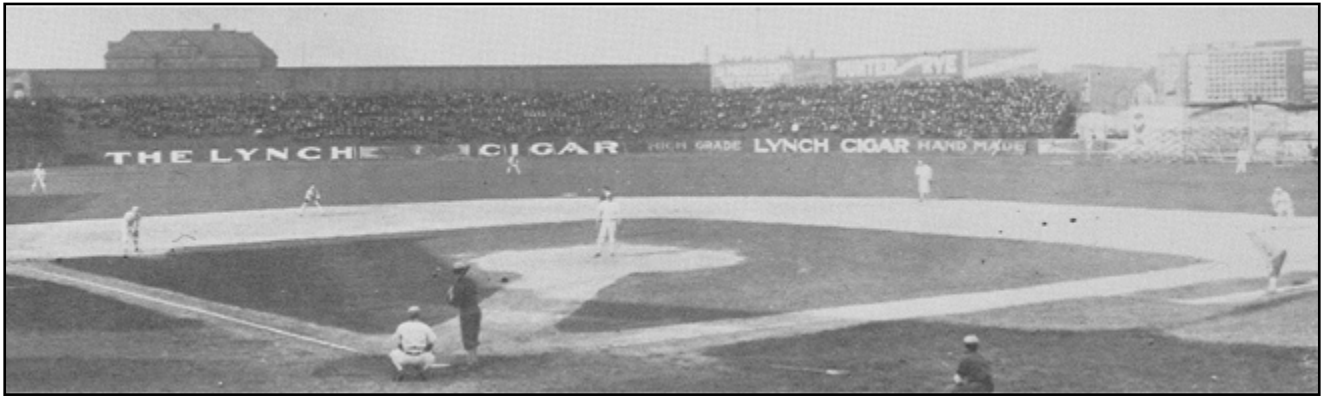
We'd like to thank all the readers who responded to the first column, including Cappy Gagnon, Lefty Blasco, Paul Browne, Joe Martini, Catherine Petroski, John Zinn, and Richard Huckins.

Only a few readers were willing to venture an opinion as to the identity of the player in the mystery photo. Paul Browne thought it might be Ted Cather, who was, along with Mann, a member of the 1914 "Miracle Braves". In the photo referenced by Browne, Cather does show some resemblance to Mann, but has no hint of the deep chin clef seen in the mystery photo. Art Devlin, offered up by Joe Martini, also lacks the chin clef and has a very different ear structure. Congratulations go to Richard Huckins who expressed his view with certainty – "The answer is Les Mann of the 1914 Miracle Braves".



A Serene and Splendid View

This photo appeared in SABR's spring 1986 *National Pastime*:

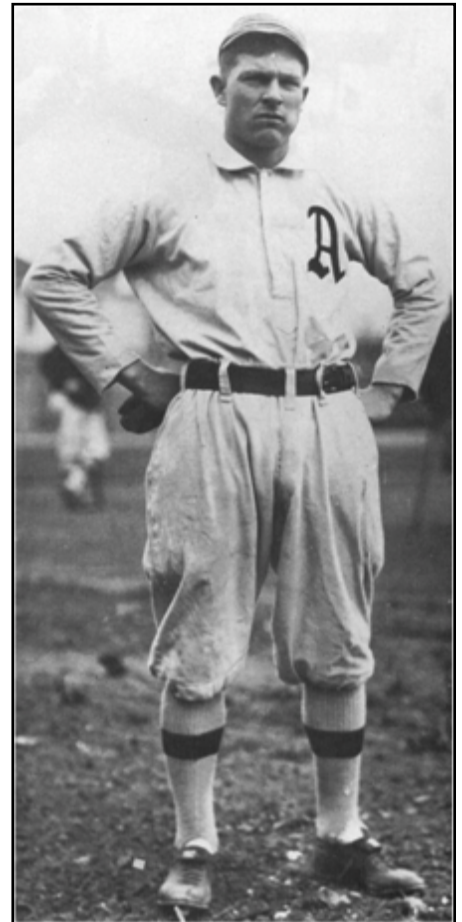


The caption read, “*A serene and splendid view of a Cubs’ game of 1914.*” Is that right? If not, what would be a correct caption? Detailed analysis and reader responses to appear in the next issue.

Flick in Philly?

The image to the right appeared in Donald Honig’s 1987 classic *The American League*. It was identified as Hall of Famer Elmer Flick, during his very brief 1902 stint with the A’s, which ended as a result of early AL-NL litigation. There are a couple of problems with this identification. According to the Hall of Fame’s Uniform Database (based on Marc Okkonen’s *Baseball Uniforms of the Twentieth Century*), the striped cap–socks combination in this photo was not used by the A’s until 1909 through 1914, long after Flick had gone on to Cleveland.

The second problem is that regardless of uniform, it clearly is not Flick (see below). Can anyone identify this player?



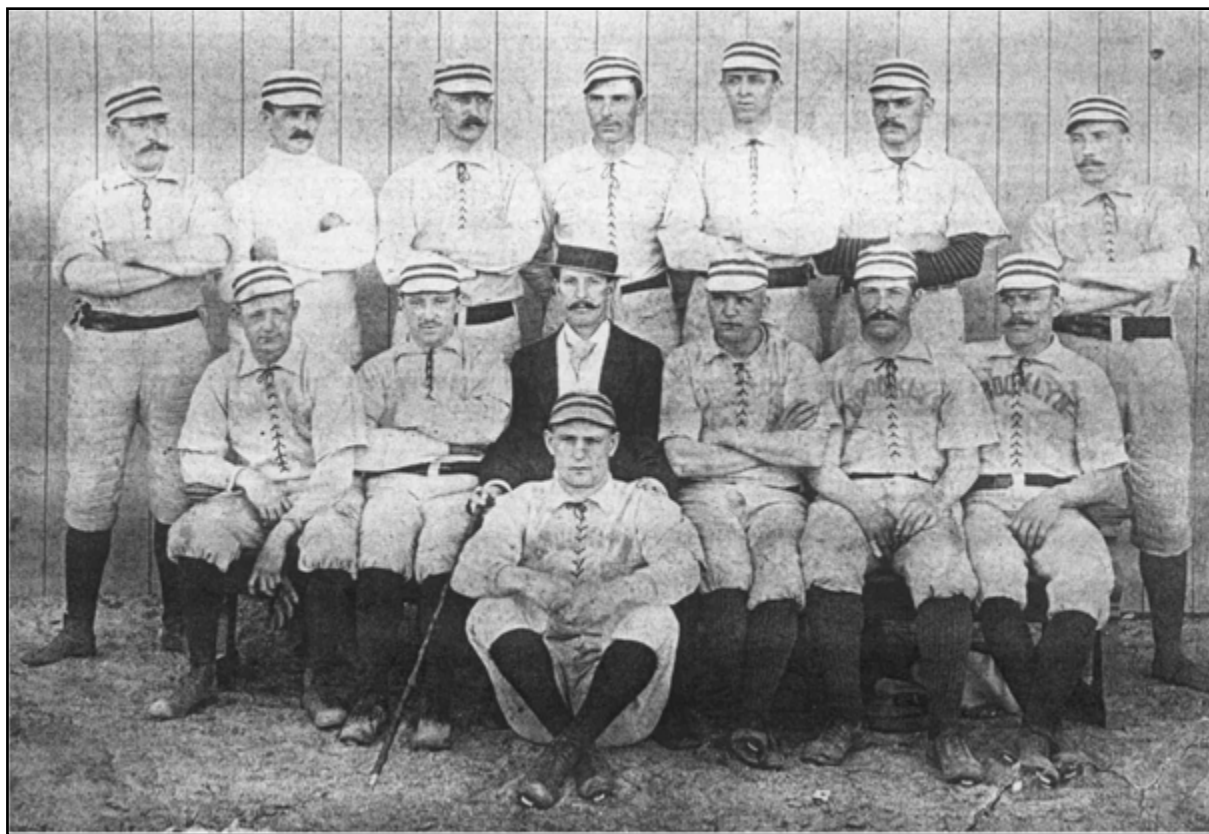
Elmer Flick



Who?

Boys of Summer - 1890

The 1890 NL pennant winning Brooklyn team photo, below, comes from the San Diego Genealogical Society. The ID's are courtesy of Hall of Fame senior curator Tom Shieber.



Top row: Oyster Burns, Bob Caruthers, Adonis Terry, Darby O'Brien, Dave Foutz, George Stallings, Tom Daly.
Mid row: Geo. Pinkney, Mickey Hughes, Bill McGunnigle (mgr), Germany Smith, Charlie Reynolds, Hub Collins.
On ground: Bob Clarke.

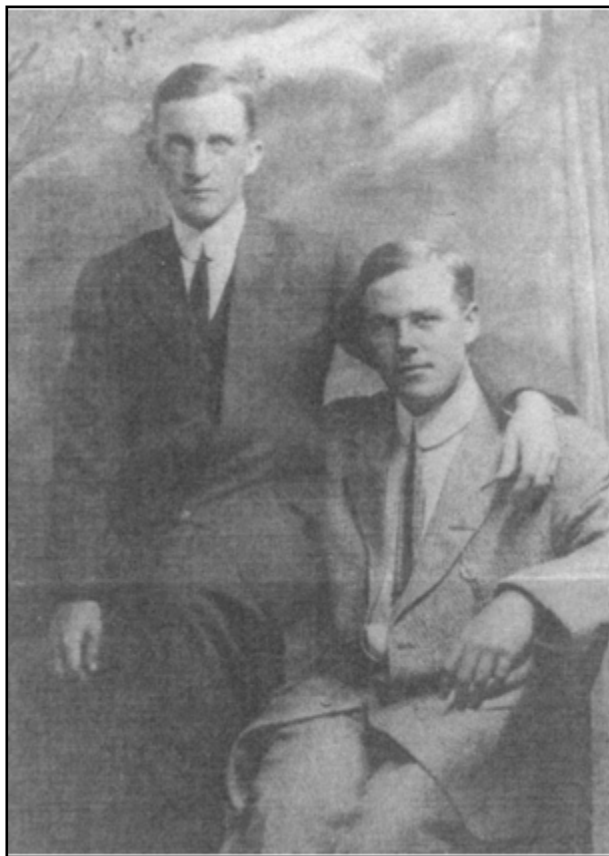
While nearly the same group comprised the 1889 AA champion Brooklyn team, the appearance of Daly and McGunnigle in the same photo dates this to 1890, the year that the club shifted to the NL. The presence of Charlie Reynolds, who is listed only on the 1889 roster, may create some confusion. However, he was briefly with the 1890 club during the spring.

The photo, right, also comes from the San Diego Genealogical Society. Who is this player? Is he in the above team photo?



Golden Dome Dept.

The image right, courtesy of Cappy Gagnon, includes Notre Dame alum Alex McCarthy on the left, who played for the Pirates and Cubs, 1910-1917. Does anyone recognize the guy on the right?



The opinions expressed in this supplement are those of the author. Supportive or contrary opinions from readers are strongly encouraged. Also, if you have a mystery photo that might be an interesting subject for a future column, please submit it to bmarlowe@comcast.net.

